

TouchKit Touch Panel
User manual
for WindowsNT4
Version: 3.1.4

CONTENT

CHAPTER 1. TOUCH PANEL CONTROLLER	2
1.1 CONTROLLER	2
1.2 SPECIFICATIONS AND FEATURES	3
CHAPTER 2. INSTALLING AND USING TOUCHKIT.....	5
CHAPTER 3. CONFIGURATION UTILITY AND RIGHT BUTTON EMULATOR	8
CHAPTER 4. UNINSTALLING TOUCHKIT.....	17

Chapter 1. Touch Panel Controller

This touch panel controller provides the optimistic performance of analog resistive touch panels for 4 wire, 5 wire and 8 wire models. It communicates with PC system directly through RS232, PS/2 or USB connector. user can see how superior the design is in sensitivity, accuracy and friendly operation. The touch panel driver emulates mouse left and right button function and supports operation systems including Microsoft Windows 95/98/ME/2000/NT/XP/XP Tablet PC Edition, Windows CE 2.12/3.0/.NET, Linux, iMac and DOS.

1.1 Controller

Interface	RS232	USB	PS/2
4-wire	Ready	Ready	Ready
5-wire	Ready	Ready	Ready
8-wire	Ready	Ready	Ready

1.2 Specifications and Features

Specifications for Touchkit controller.

Specifications	
Power requirements	+5VDC (Maximum 100mA, typical 70mA, 50mV peak to peak maximum ripple)
Operating temperature	0 to 50 °C
Storage Temperature	-40 to 80 °C
Relative Humidity	95% at 60 °C
Protocol	RS232 Model: 9600 bauds, None parity, 8 data bits, 1 stop bit USB Model: USB 1.1 Low speed PS/2 Model: PS/2 mouse
Resolution	2048 X 2048
Report rate	RS232 Model: Max. 160 points/sec USB Model: Max. 160 points/sec PS/2 Model: Max. 140 points/sec
Response time	Resistive: Max. 35 ms Capacitive: Max. 20 ms
Pin out definition	4 wire model: X, Y, X, Y 5 wire model: UL, UR, COM, LR, LL 8 wire model: X+, X+ref, Y+, Y+ref, X-, X-ref, Y-, Y-ref
Panel resistance	4, 8 wire resistive model: 200 ~ 900 ohm (pin to pin on the same layer) 5 wire resistive model: 50 ~ 200 ohm (pin to pin on drive layer)
Regulatory Approvals	FCC-B, CE

Features for Touchkit software

Features	
Calibration	<ol style="list-style-type: none"> 1. Fast full oriental 4 points position 2. Support monitor / display rotation 3. Support multiple monitor / display 4. Support QVGA and Half-VGA function
Compensation	Accuracy 25 points linearity compensation.
Draw Test	Position and linearity verification
Controller Setting	<ol style="list-style-type: none"> 1. Support multiple controllers 2. Dynamical add / remove controllers 3. Change Controller interface without reboot.
Language	Support 9 languages for Windows
Mouse Emulator	<ol style="list-style-type: none"> 1. Right / Left button emulation 2. Normal / Click on touch / Click on release mode 3. Cursor visibility
Sound Notification	<ol style="list-style-type: none"> 1. No sound 2. Touch Down 3. Lift Up 4. Frequency adjustment 5. Duration adjustment
Double Click	<ol style="list-style-type: none"> 1. Configurable double click speed 2. Configurable double click area
OS support	<ol style="list-style-type: none"> 1. Windows 95/98/ME/NT4/2000/XP/ Windows XP Tablet PC Edition 2. Windows CE 2.12, 3.0, .NET 3. Linux (X Window Version: 3, 4 Red Hat 6.0 ~ 8.0 Mandrake 5.0 ~ 9.0) 4. iMac. OS9 5. MS-DOS: Support display resolution: 320x200, 640x200, 640x350, 640x480, 800x600, 1024x768 and 1280x1024
COM port support	<ol style="list-style-type: none"> 1. Support COM 1 ~ COM 256 for Windows and Linux 2. Support COM 1 ~ COM 8 for DOS

Chapter 2. Installing and using TouchKit

TouchKit is software, which contains drivers of the touch panel controllers for the specified communication connectors, RS232, PS/2 and USB, and the other two utilities:

- **Touch Tray support**

This is utility for emulating the right and left button of mouse through controlling touch panel. Users can toggle between right or left mouse buttons by this utility.

- **Configuration support**

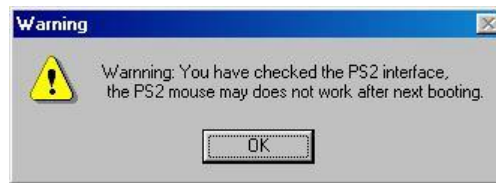
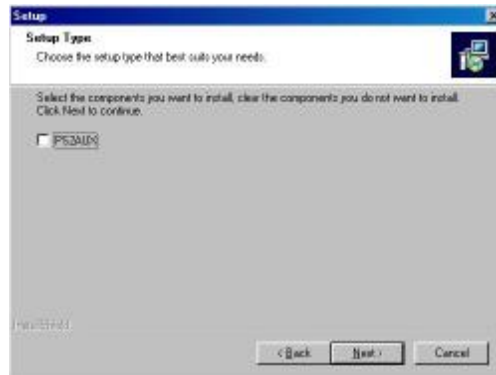
The calibration and draw test of touch panel are done by this utility. Besides, users can add or remove for new RS-232, PS/2 or USB touch panel devices.

Follow these steps to install **TouchKit**.

1. Put the **TouchKit** CD to CD-ROM.
2. Change directory to **WinNT4**
3. Double click the **Setup.exe**, then windows starts to run the installation program.
4. Just click [**Next >**] button to continue installation.

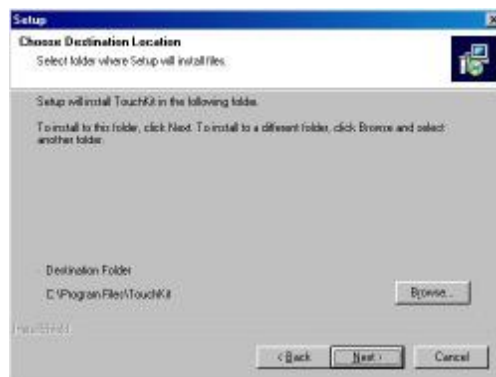


5. Then check the check box if PS/2 touch controller is to be installed. The default is unchecked. Then Press **[Next >]** to continue installation.

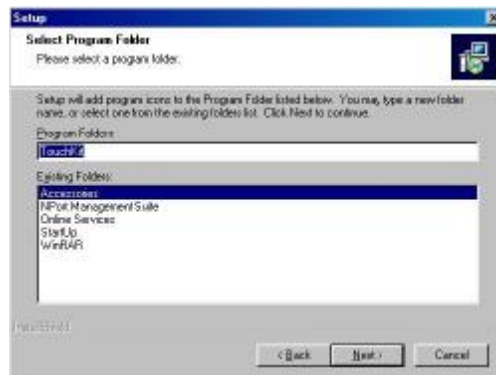


System will give you a warning, if user checks the PS2AUX check box,

6. Select the appropriate folder where set-up files will be installed. Then Press **[Next >]** to continue installation.



7. Then type in the name of program folder for **TouchKit** or press **[Next >]** to continue. There will be a default name for it.



During driver installation, the setup program will scan COM port for RS232 **Touchkit** controller. Once the controller was scanned, the setup program will display a dialog as



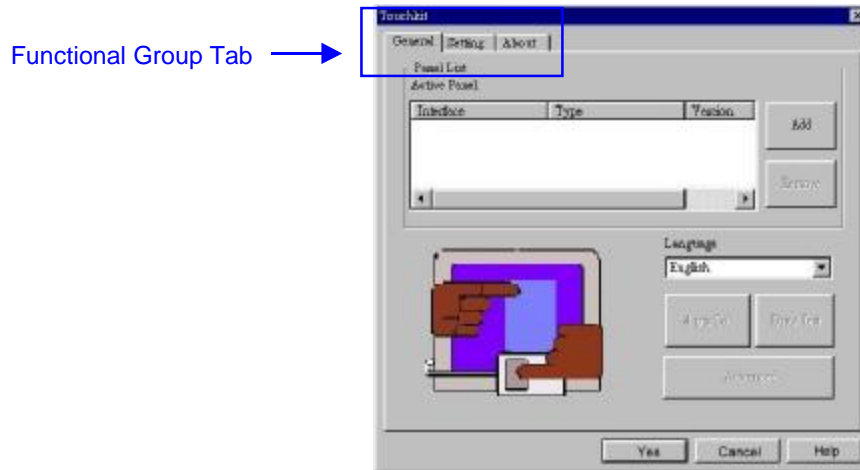
Click Yes to add the controller on the specified COM port automatically.

8. Windows is copying files to disk and the setup is complete. It will request re-boot computer. Press **[Yes >]** to re-boot immediately or **[No >]** to re-boot later. The installation will not be finished until system re-boot.



Chapter 3. Configuration Utility and Right Button Emulator

There are three property pages in *TouchKit* utility, and they are **General**, **Setting** and **About**. Each property page contains different functions for users to do the adjustments. Therefore, users can easily manage all the *TouchKit* controllers through *TouchKit* Utility.

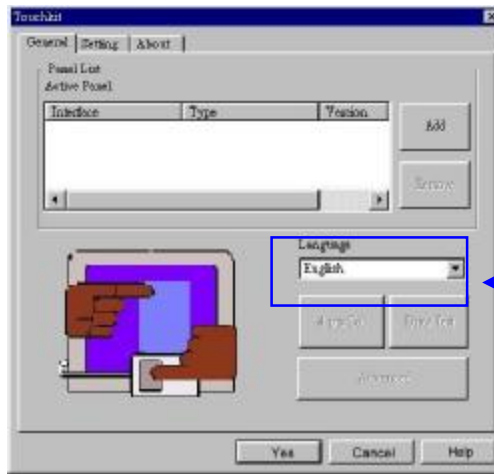


General

General property page contains the functions of **language selection**, **devices add/remove**, **4 points calibration**, **Draw test** and **advanced**.

<Language>

TouchKit supports multi-language user interface. Users could select native language that is compatible to operation system support. For example, if the operation system is a traditional Chinese version, user could see the normal display words under the traditional Chinese and English mode. There are nine different languages, **English**, **Traditional Chinese**, **Simplified Chinese**, **French**, **Spanish**, **German**, **Japanese**, **Italian** and **Korean**, supported in this feature of *TouchKit*.

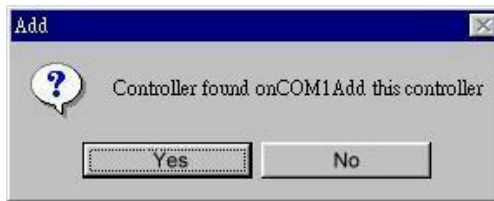


Note to select the compatible language first.

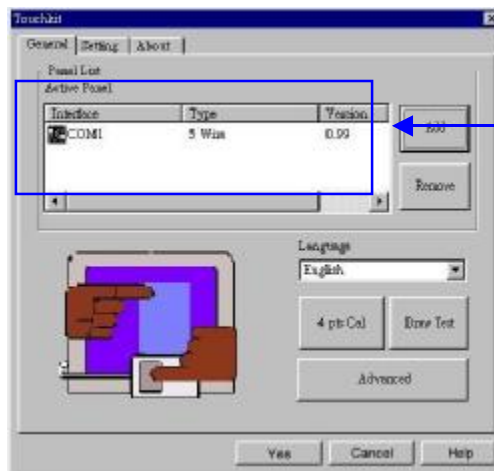
Select the compatible language first or user may not see the normal display of each button.

<Add> / <Remove>

Please check the touch panel devices (including its controller) are equipped well, then click **[Add]** button to add all of those RS-232 and PS/2 components to the **Panel List** dialogue box.



There is one devices found. Press **[Yes]** to continue.

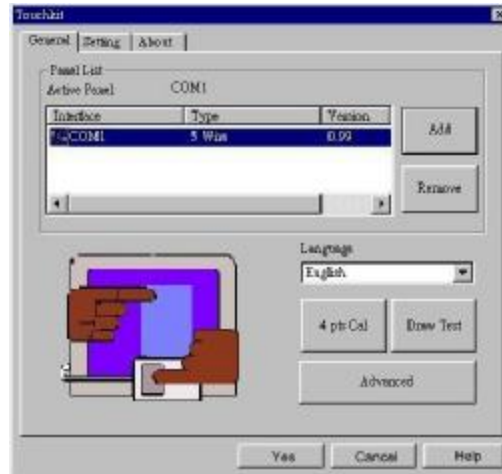


Device is found in COM1

The controller is displayed on the Panel List box. users can get the information of interface, type, firmware version and baud rate for each controller.

Select one device after added more than one device at the panel list window.

The one selected will activate the panel, and remember to do the calibration before starting to use touch panel.



There are three buttons, **[4pts Cal]** **[Draw Test]** **[Advanced]**, at the lower section of the **General** property page.

<4pts Cal>

Correct 4 point locations on screen with the panel. Press **[4 pts Cal]**, screen displays as follows.

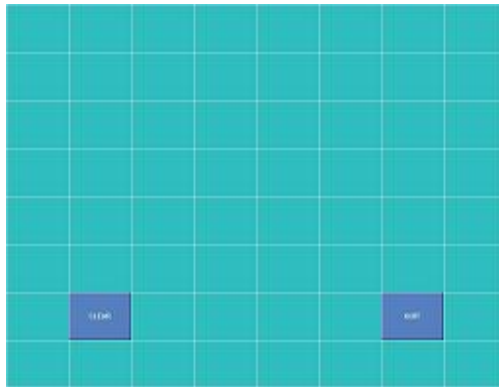


Touch the blinking symbol on panel until beep or stop blinking.

<Draw Test>

Test the drawing position related to the display screen on panel.

Click on the **[Draw Test]** button. There will be a squared blue display showing.

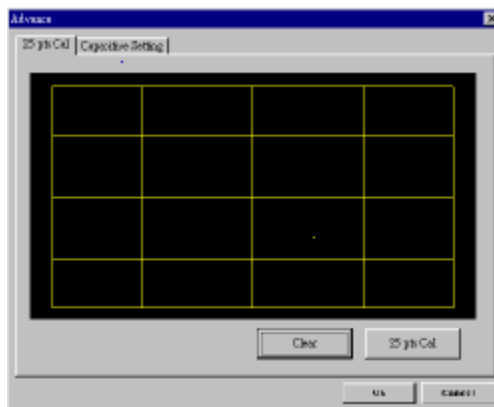


In drawing test window, users can click **[Clear]** button to clear the window. Also, User can click **[Quit]** or press mouse right button to quit from the drawing test.

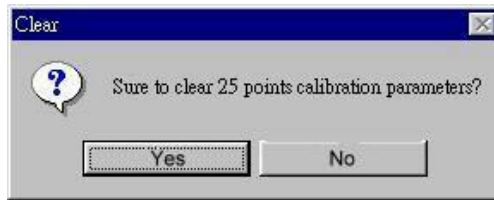
If **no touch action** happen within minutes, it will quit from the draw test window automatically. In drawing test window, users can verify the panel linearity, calibration capability, and drawing line quality.

<Advanced>

Touchkit provide more accuracy 25 points calibration for touch sensor. In addition, **Touchkit** provide controller setting for capacitive touch sensor. If the capacitive controller is selected, a capacitive setting property page appears on the advanced sheet. In general case, it does not need to do 25 points calibration other then bad linearity sensor.



Press **[Clear]** to clear the previous calibration records.



Press **[Yes]** to clear previous records. The record will become default record.

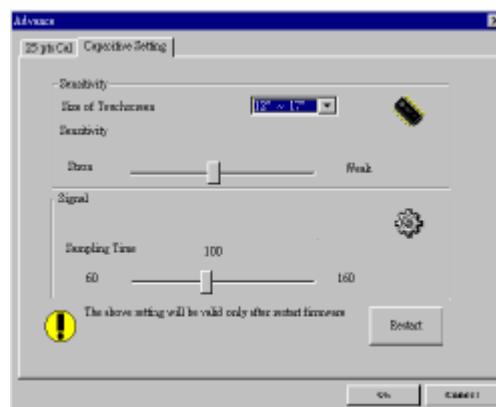
Press **[25ptCal]** to do 25 points calibration. Correct 25 point locations on screen with the panel.



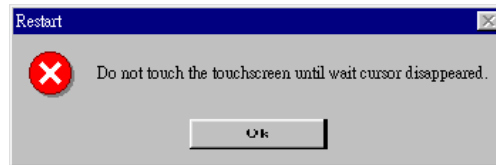
Touch the blinking symbol on panel until beep or stop blinking.

After the calibration, the new record will overwrite the old one.

If the selected controller is capacitive type, an extra property page for capacitive setting adjustment shown as below:



Please select property size of capacitive screen first, and press **[Restart]**



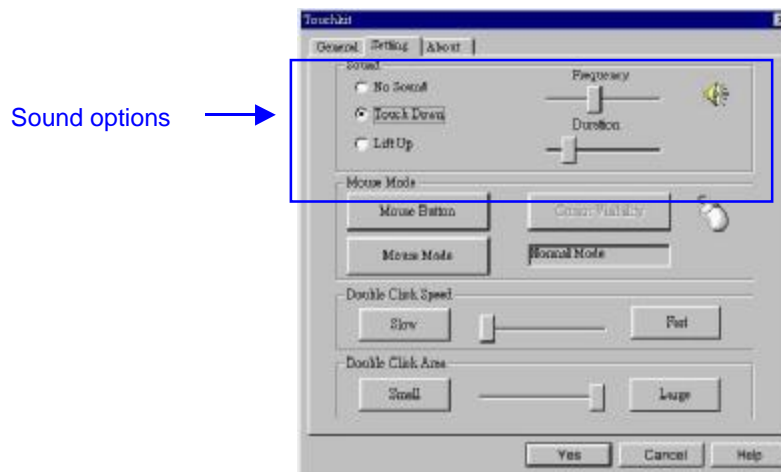
The capacitive controller will restart, and do not touch the screen before the warning message disappears

Warning: Do not adjust the sensitive and sampling time without RD help

Setting

There are three functional groups in **Setting** property page, and at the upper section of the property page is **sound option**; at the middle section is **Mouse Mode**; and at the lower section is **Double Click Adjustment**.

The **Sound** options provide user the click feedback while touching the panel. Select preferred option first.



<No Sound>

Users could choose to make no sound while using the touch panel.

<Touch Down>

The system will make a sound while touching the panel.

<Lift Up>

The system will not make any sound until finger leaves the touch panel.

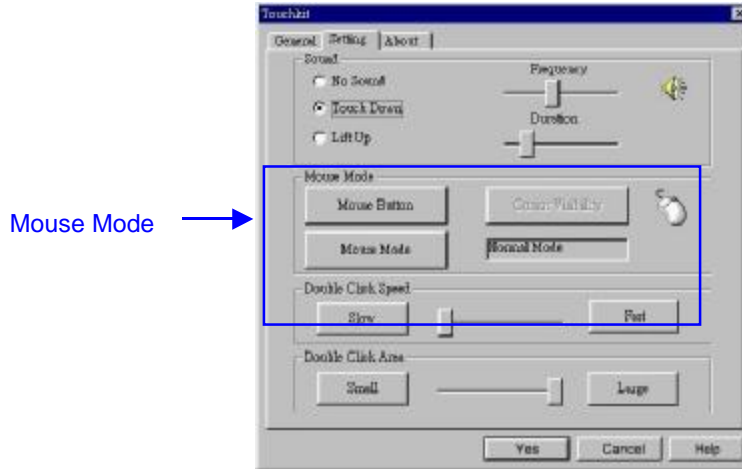
<Frequency>

Sound frequency, drag the cursor from left to right is low to high.

<Duration>

Sound duration, drag the cursor from left to right is short to long.

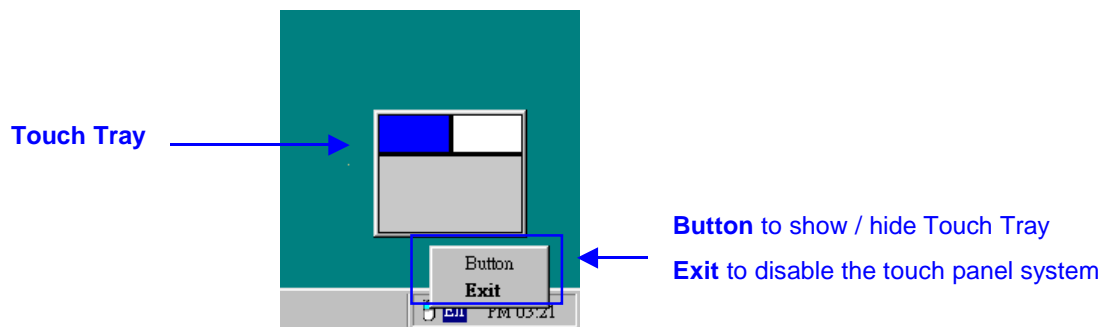
The **Mouse Mode** provides user different operating options. They are as follows:



<Mouse Button>

Click it to **show / hide Touch Tray** on the right bottom corner of the desktop. The touch panel system starts with the computer booting, and a mouse icon shows in the taskbar.

Users can choose show or hide **Touch Tray** from the mouse icon in the taskbar. Just right click the mouse icon, there will be a pop-up box. Using the **Button** to choose show or hide, and if user wants to disable the touch panel system, choose **Exit**.



Change **right / left** button by clicking the upper small rectangular box of **Touch Tray**. Blue area expresses what button has been selected.

<Mouse Mode>

There are three kinds of mouse mode user could choose,

[Normal Mode]

It provides all the mouse functions, including the dragging function.

[Click on Touch]

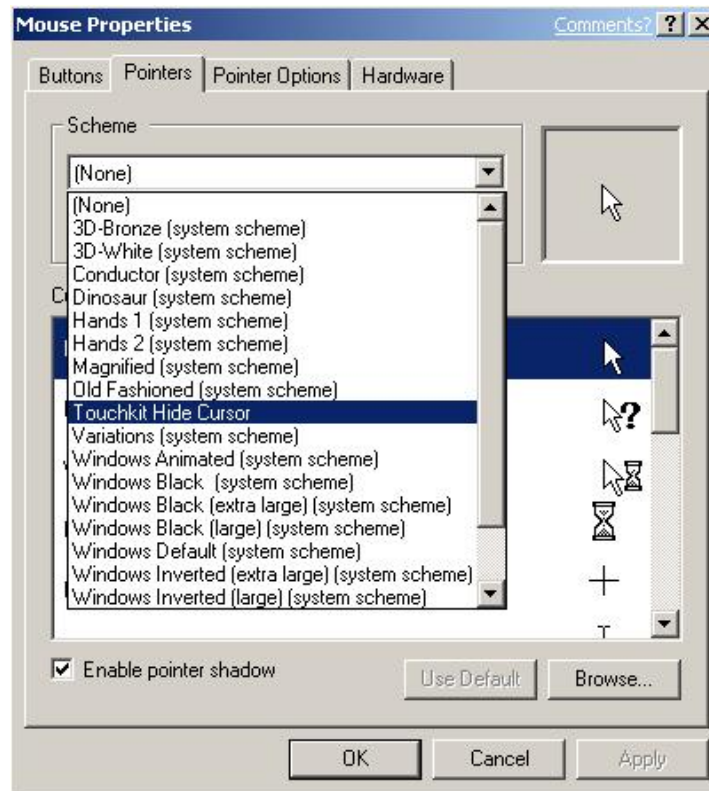
Click action is executed as soon as user touches the panel.

[Click on Release]

Click action will not be executed until finger leaves the panel.

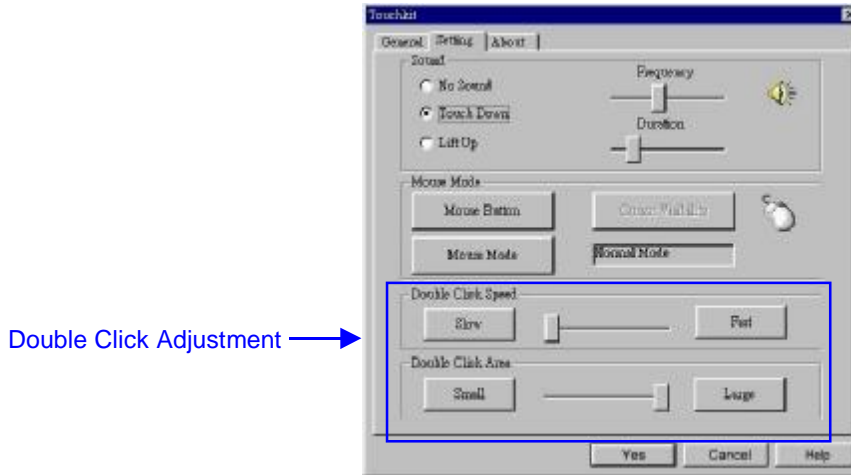
<Cursor Visibility>

Cursor visibility function provides user to hide the cursor in the display. Please go to **Start / Control Panel / Mouse / Pointers / Scheme**, and choose **TouchKit Hide Cursor**. Press **[Apply]** to make setting change, and press **[OK]** to escape the property page.



If user wants to cancel the function of TouchKit Hide Cursor, do the steps again and choose the other scheme.

The **Double Click adjustment** provides user to set up the tolerance while double clicking. They are as follows:



<Double Click Speed>

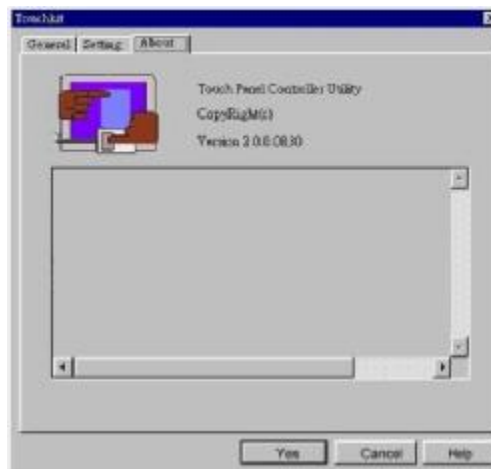
Double Click Speed is the double click response time for Windows system. User can adjust the proper double click for easy double click by touch panel.

<Double Click Area>

Each one touch has its own touch tolerance once someone may not fix in one point. So if user set the Double Click Area to **<Smaller>**, the panel will be very sensitive about micro-move while user wants to fix on a point. If user set it to **<Larger>**, it tolerates the larger touch point movement while user want to point at a fixed position.

About

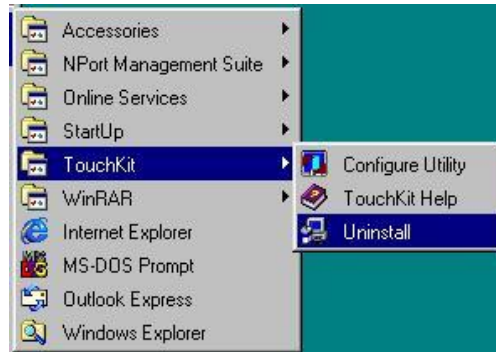
Information about **TouchKit**.



Chapter 4. Uninstalling TouchKit

Follow these steps to uninstall *TouchKit*.

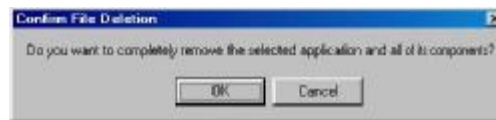
1. Go to **Start / Programs / TouchKit / Uninstall**, and execute it.



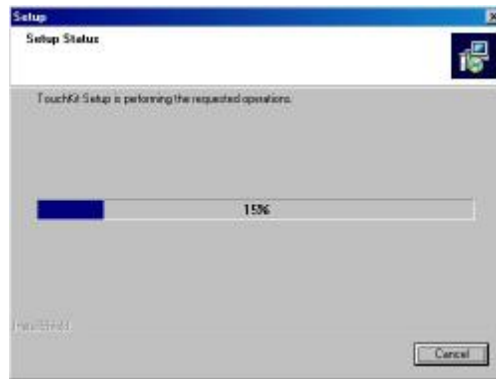
2. *TouchKit* setup dialog appears, and prepares to uninstall.



3. Confirm dialog, press **[OK]** to start un-installation; **[Cancel]** to cancel un-installation.



4. Start to uninstall **TouchKit**.



If user does not want to uninstall **TouchKit** at this moment, press **[Cancel]** to terminate the uninstall process.

5. **TouchKit** will not be removed until system re-boot. Press **[Yes]** to re-boot immediately or **[No]** to re-boot later.

