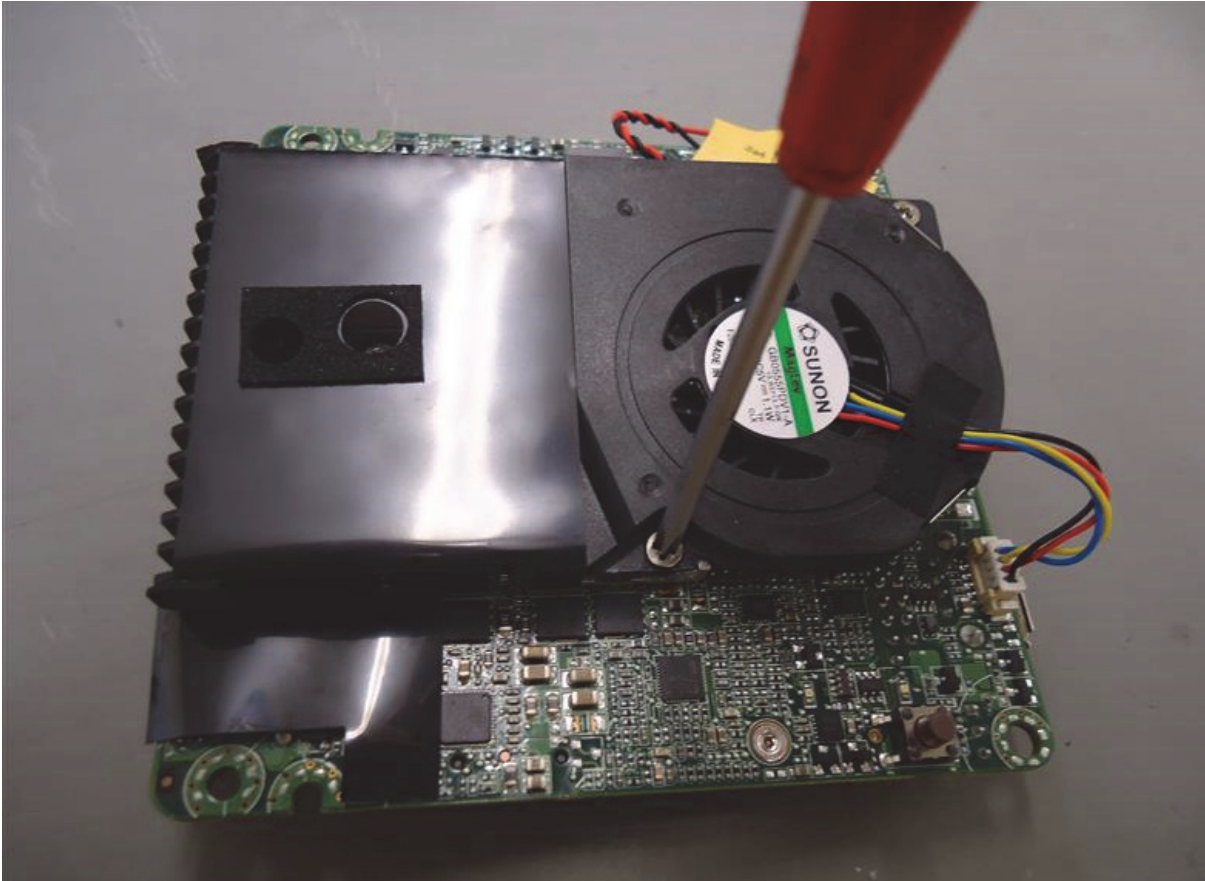


## Blackpete-NUC Assembling

First you need to remove the active fan from the NUC mainboard.

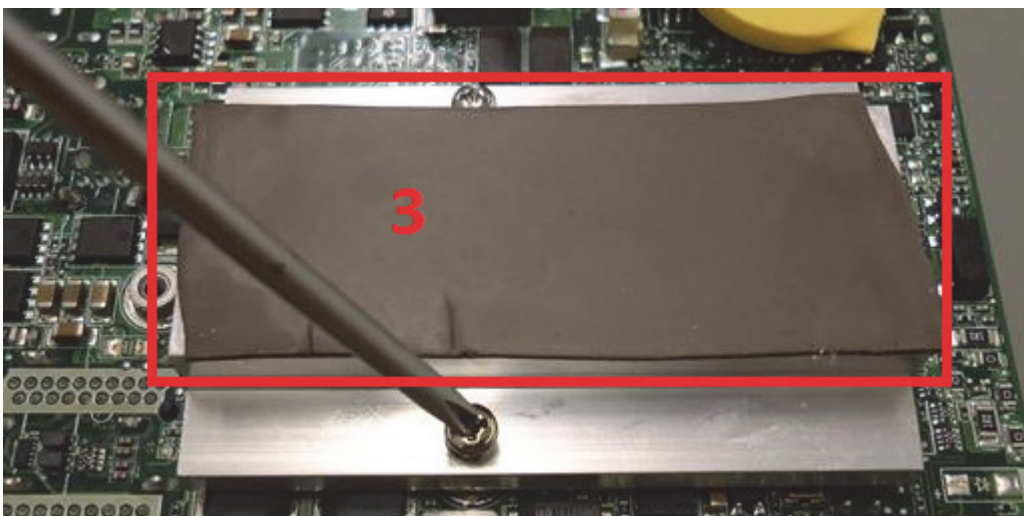
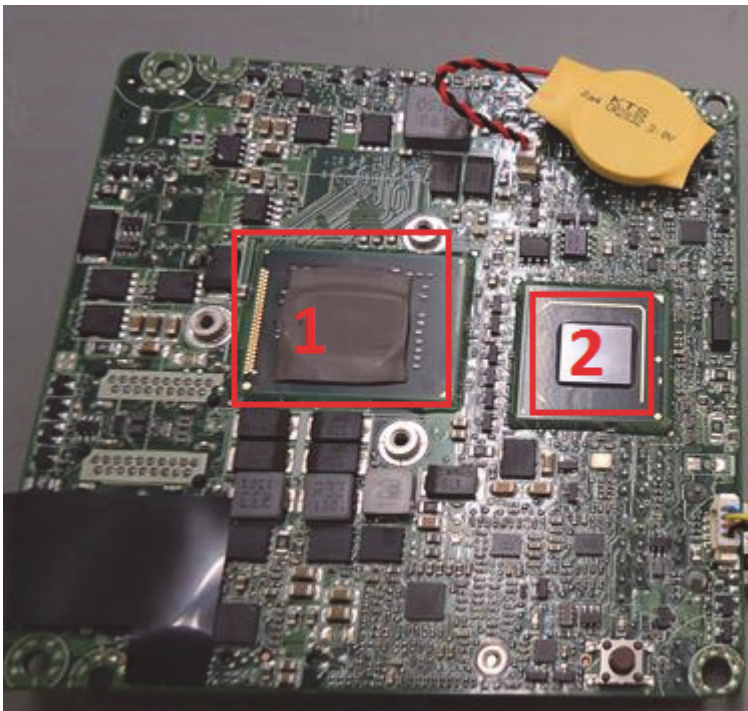




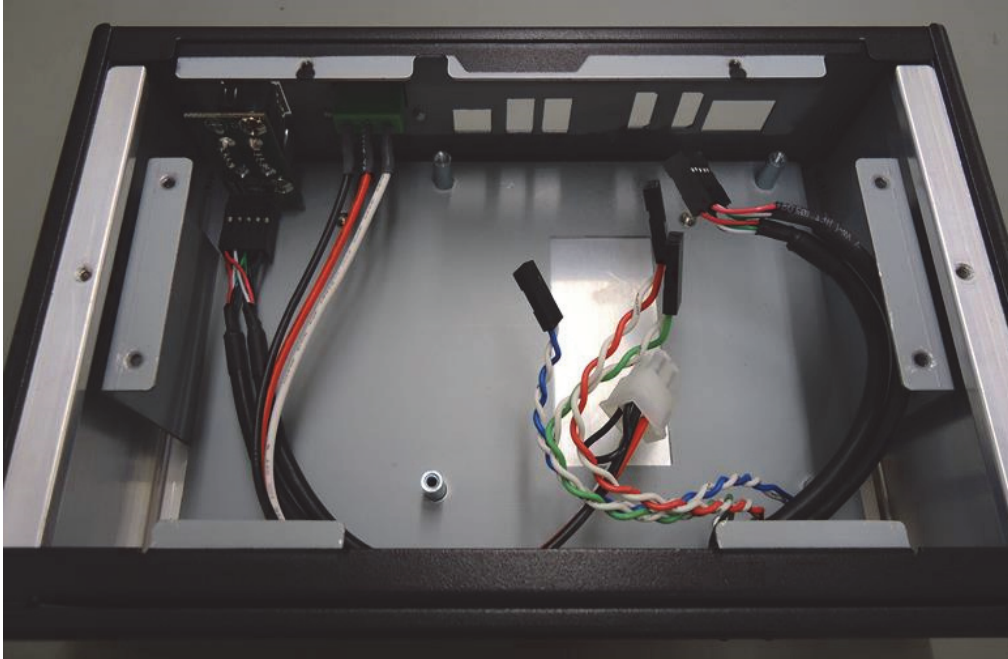
Now you need to install the passive heatsink.

**Please place the 3 thermal pads on the positions listed below :**

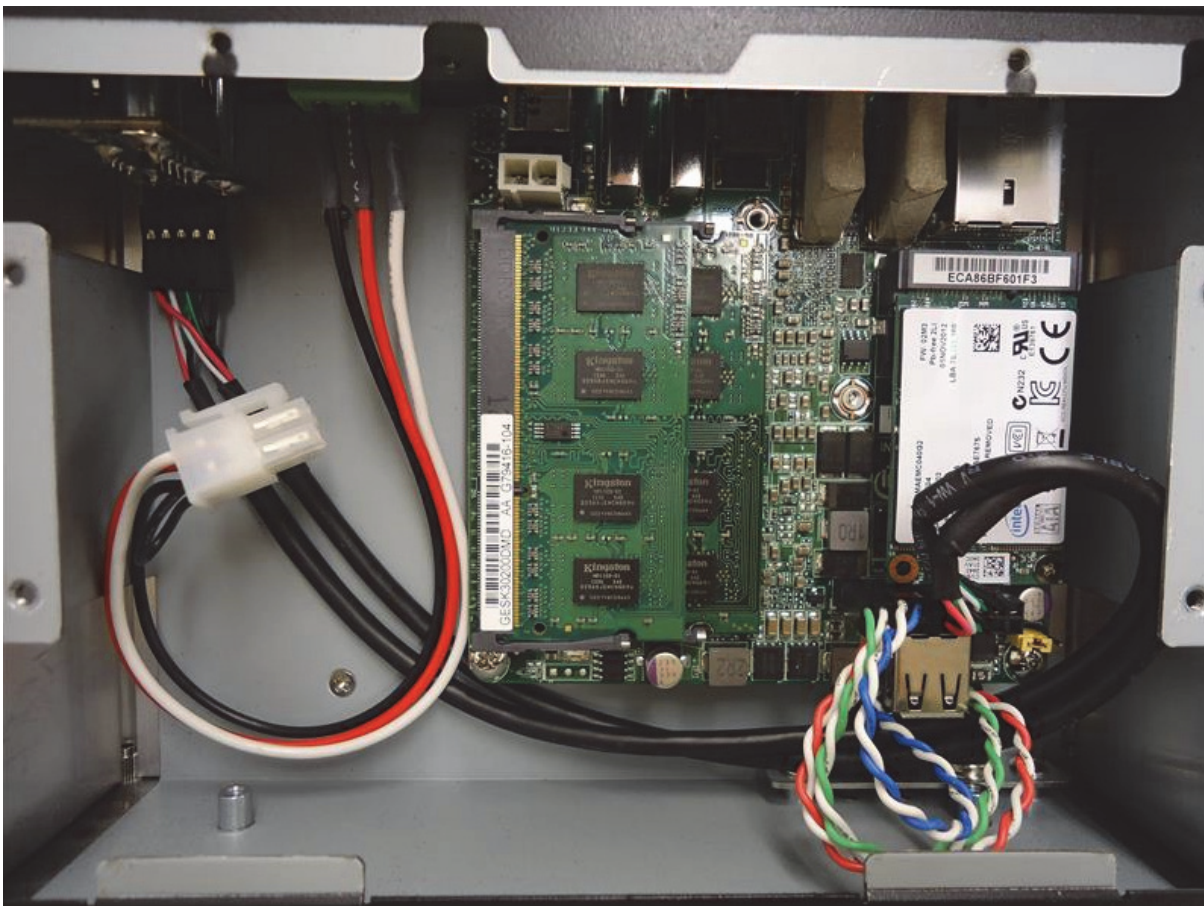
- 1x pad between heatsink and CPU (1)
- 1x pad between heatsink and GPU (2)
- 1x pad between heatsink and enclosure (3)



Now open the enclosure and remove the adapter plate.



Insert the mainboard.



**To install the mainboard:**

- Fix mainboard
- Insert RAM module (eg. <http://www.cartft.com/catalog/ql/151> )
- Insert mSATA SSD (eg. <http://www.cartft.com/catalog/ql/156> )

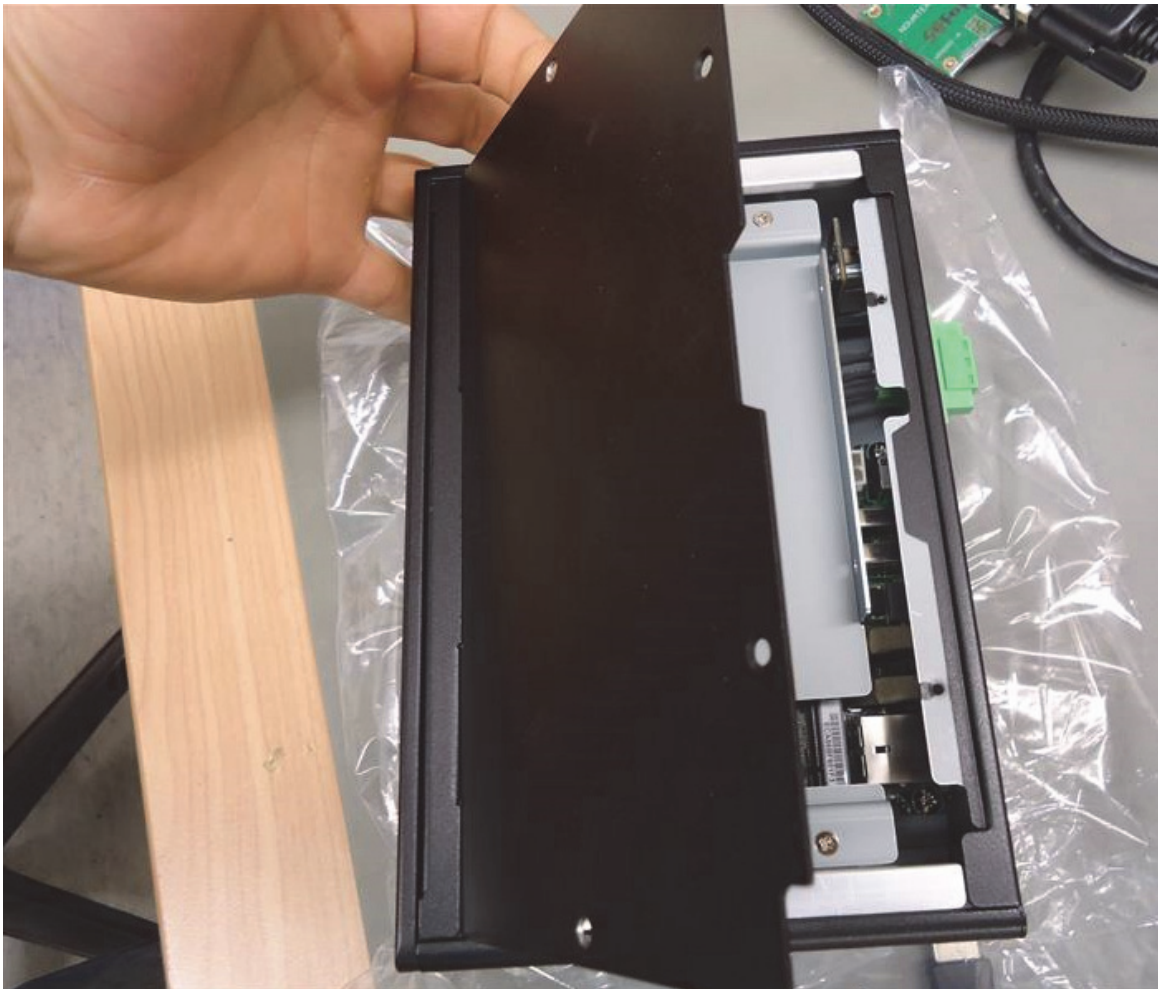
**Alternatively you can install 2.5" HDD/SSD (instructions are in this document)**

- Connect Power LED, HDD LED, Power-Switch and USB cable

**Please note that green and red cable are plus (+) .**

**With blue and white cables you do not need to take care about + and -**

Now attach the adapter plate again and close the enclosure..





**CARTFT.COM**  
Shop for mobile  
PC- and GPS-Solutions

Power Up Your Car



Now the basis installation is completed.





- Power button at front
- Green LED= Power ON / Red LED= SSD Activity

### Instructions for installing DCDC-USB converter (100Watt)

You can find the optional DCDC-converter available here : <http://www.cartft.com/catalog/il/1114>

Install the DCDC-converter in the enclosure.

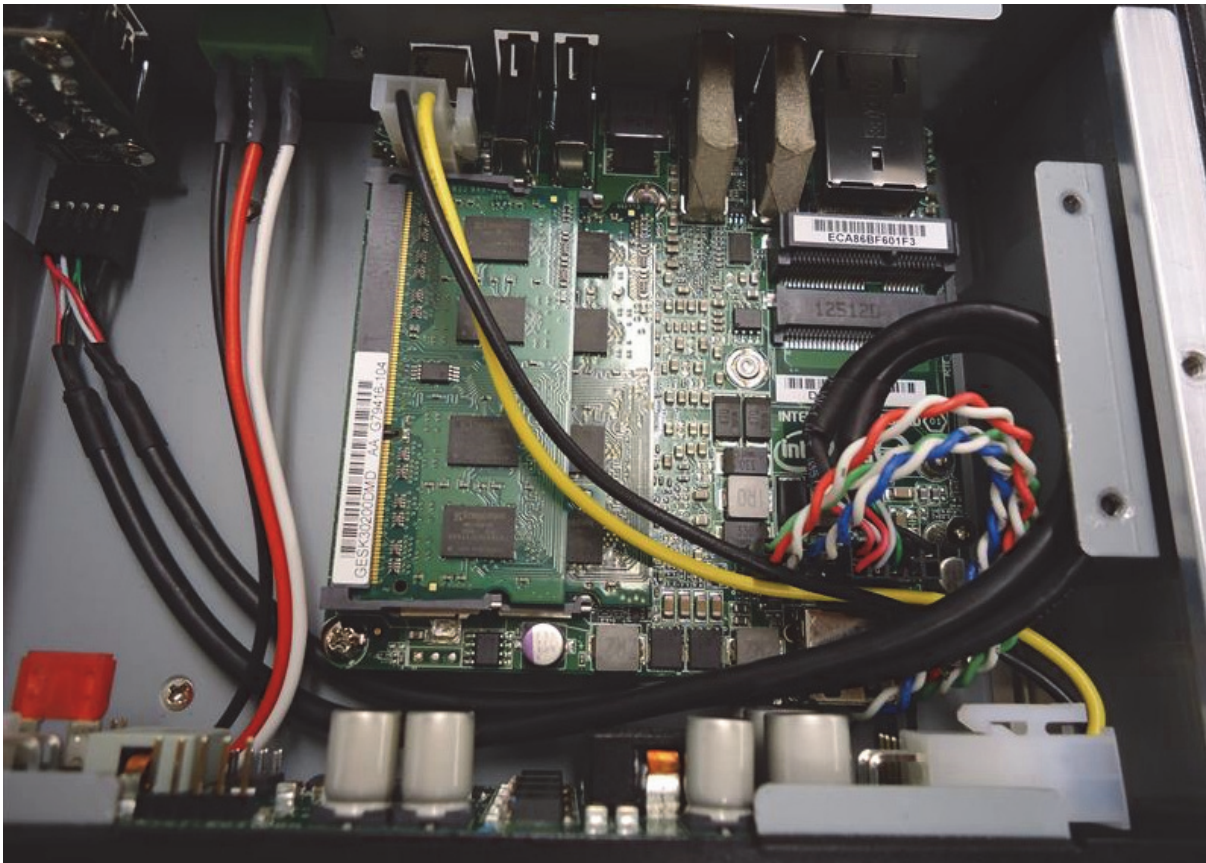
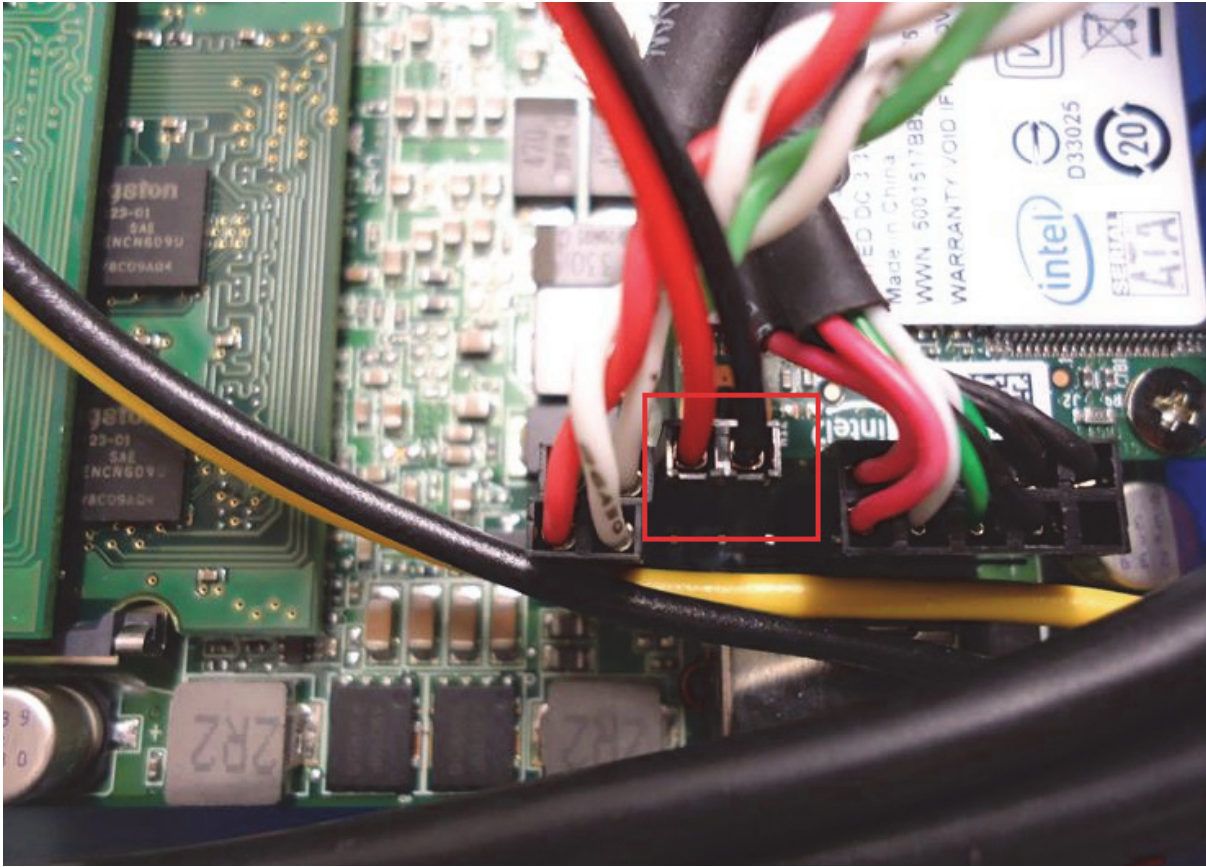


Connect DCDC-converter with the mainboard (4pol-connector)

Connect PSW (power switch) with the mainboard (instead of blue Power-Button of the enclosure)

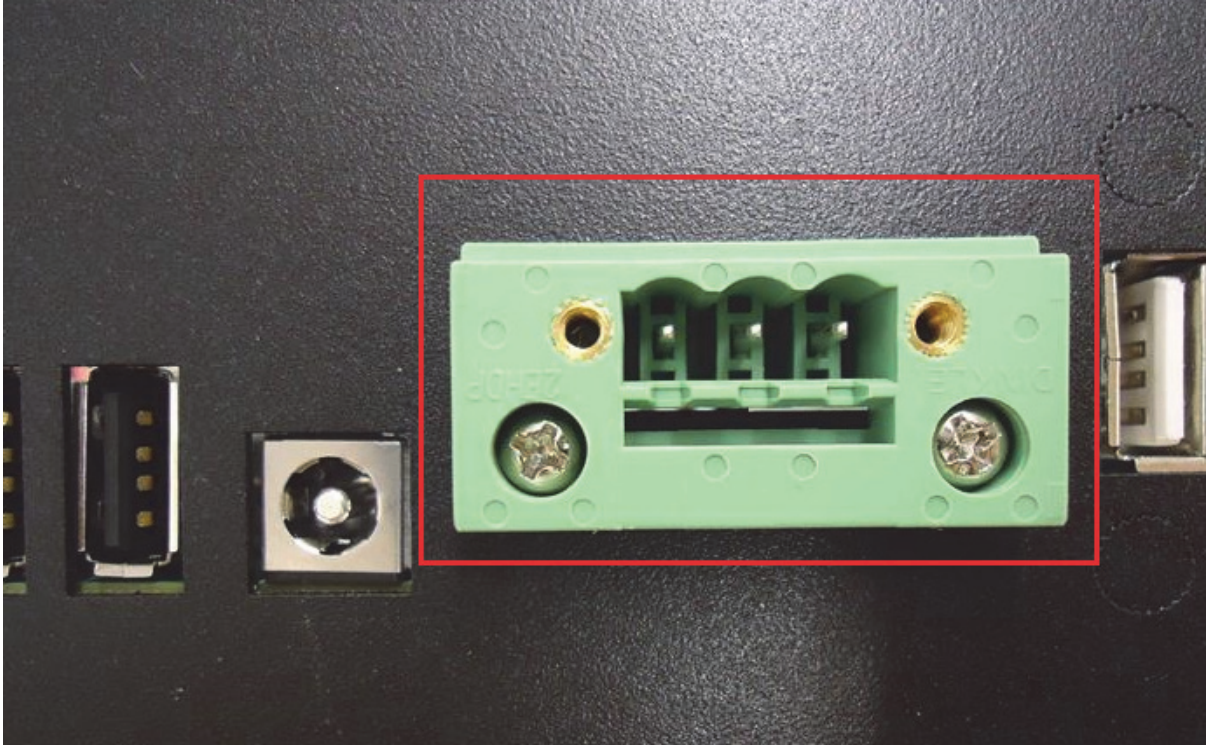
- Notes for DCDC-USB configuration:

[http://www.cartft.com/support\\_db/support\\_files/DCDC-USB\\_Manual\\_DE.pdf](http://www.cartft.com/support_db/support_files/DCDC-USB_Manual_DE.pdf)





Now the system can be powered through the green power connector.

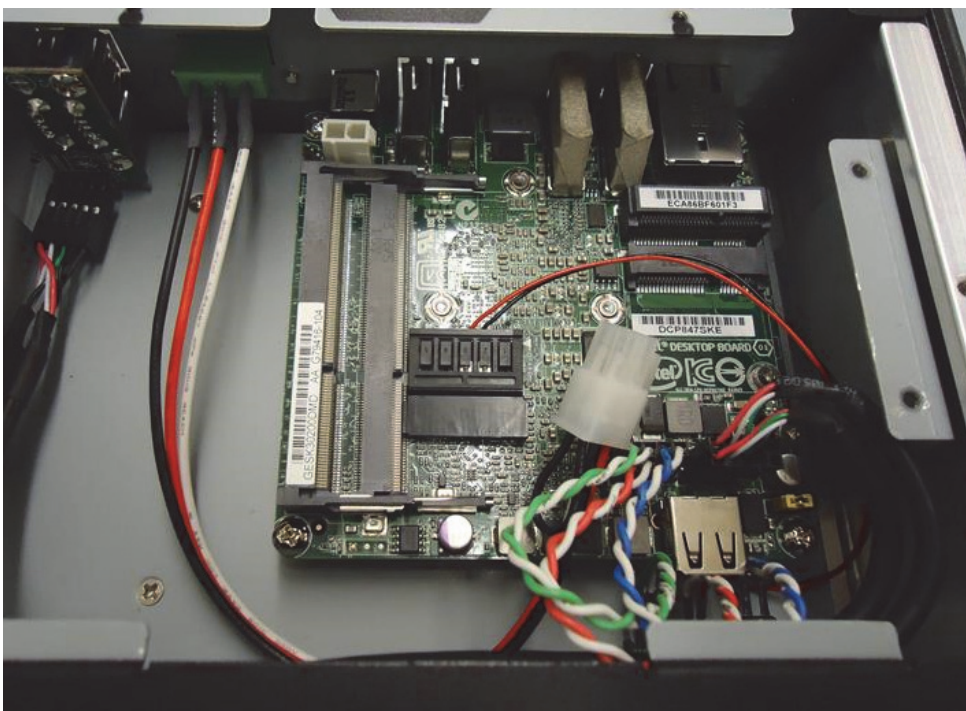
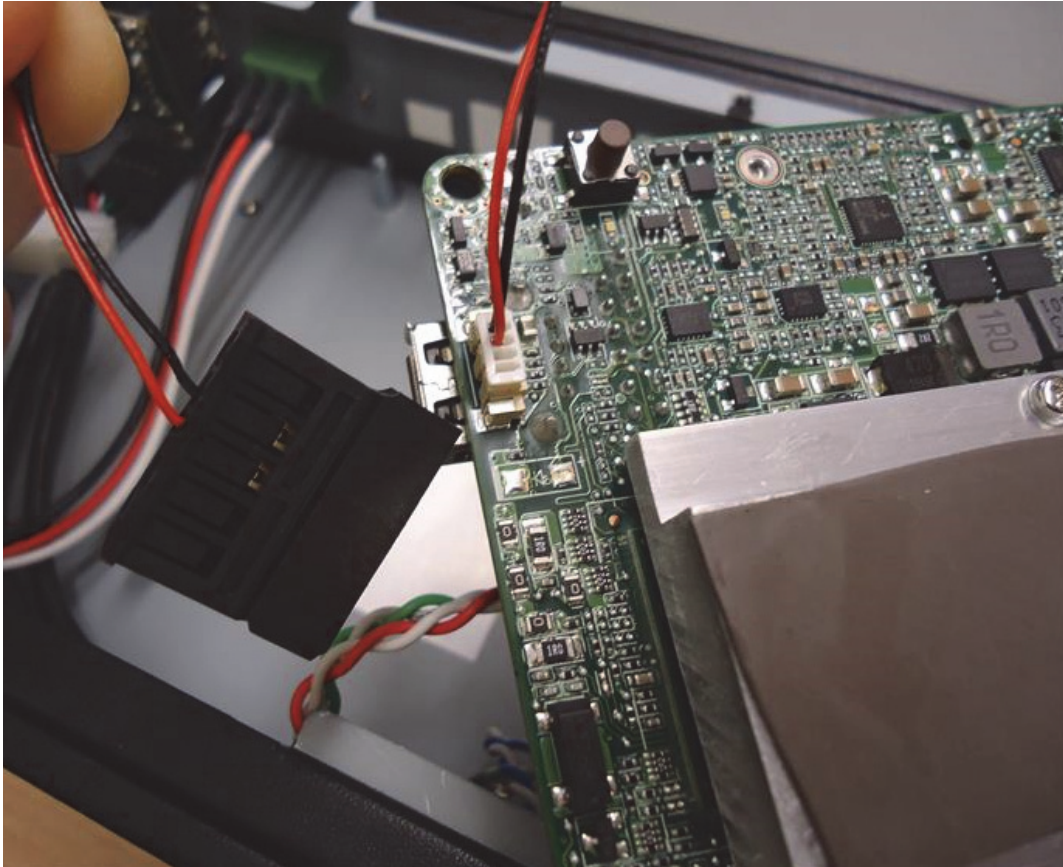


**Note : Power button is now without function!**



Installation of 2.5" HDD / SSD drive

Connect SATA-power cable with the mainboard (fan connector)





**CARTFT.COM**

Shop for mobile  
PC- and GPS-Solutions

Power Up Your Car

Mount the mSATA-to-SATA adapter in MiniPCle slot



Connect SATA-data cable.





**CARTFT.COM**

Shop for mobile  
PC- and GPS-Solutions

Power Up Your Car

Mount the 2.5" HDD/SSD drive.



Mount the adapter plate in the enclosure.



Now close the enclosure and installation of 2.5" HDD/SSD ist finished.

<http://www.CarTFT.com> / Alex Wickberg / 21.05.2013